

## E-VANS IN HØJE-TAASTRUP

Established a "winning circle" of public administration, transport companies and utilities providers facilitating new e-mobility implementation scenarios.



- ✓ 6 models of e-Vans tested under real conditions by commercial stakeholders
- ✓ Free charging spots to accelerate the electrification of urban freight
- ✓ New local network of urban freight companies created to deploy up to 4 e-Vans

## LEVS IN TURKU

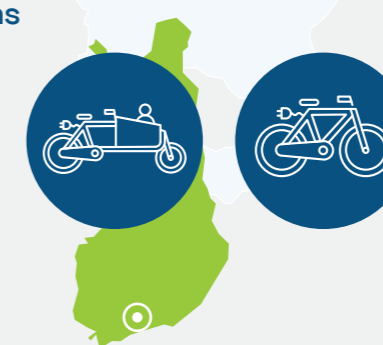
E-Cargo bikes and e-bikes in inner city logistics within city organizations; winter conditions testing; user survey; behavior analysis; green procurement.



- ✓ Usability in winter conditions
- ✓ Vehicle & charging optimization
- ✓ Technological & behavioural barriers and drivers to e-vehicle deployment

## FAMILY BIKES IN HELSINKI

E-bike promotion through longer testing experiments to motivate families to replace second cars; advertising campaign; public events to test e-cargo and e-bikes. 1 810 people tested e-bikes at 32 events, and 1 236 people and 75 housing companies applied to participate in longer experiments.



- ✓ "Replace your second car" campaign
- ✓ Shared use of E-bikes among apartment complexes
- ✓ E-bike promotion campaigns

## ELECTRIC BUSES IN HAMBURG+TARTU

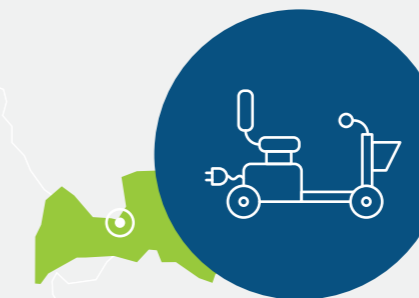
Data analysis for route and charging optimisation, fleet management, viability studies.



- ✓ User survey
- ✓ Route optimisation
- ✓ Procurement and fleet management

## E-SCOOTERS IN RIGA

Use of e-scooters on a public graveyard and the city's hospital, viability and operational testing, improved social inclusion of the people with limited mobility possibilities.



- ✓ Accessibility of public spaces for disadvantaged groups
- ✓ Experiments with different workloads in a variety of terrains.
- ✓ Under ownership of the City Council

## E-FERRIES IN ROSTOCK

Planning, procurement & implementation of the transformation process. Capacity building for clean water transport, fulfilling local emission targets.



- ✓ Route optimisation
- ✓ White paper
- ✓ Guidelines for stakeholders

## E-BIKES IN GDANSK

Advertising campaign to increase participation, gamifying commute with 4664 participants and everyday travel with 3543 participants.



- ✓ Implementing a new, first of its kind e-bike sharing system
- ✓ Route & charging optimisation
- ✓ Insights on rider behavior

**CONTACT DETAILS:**



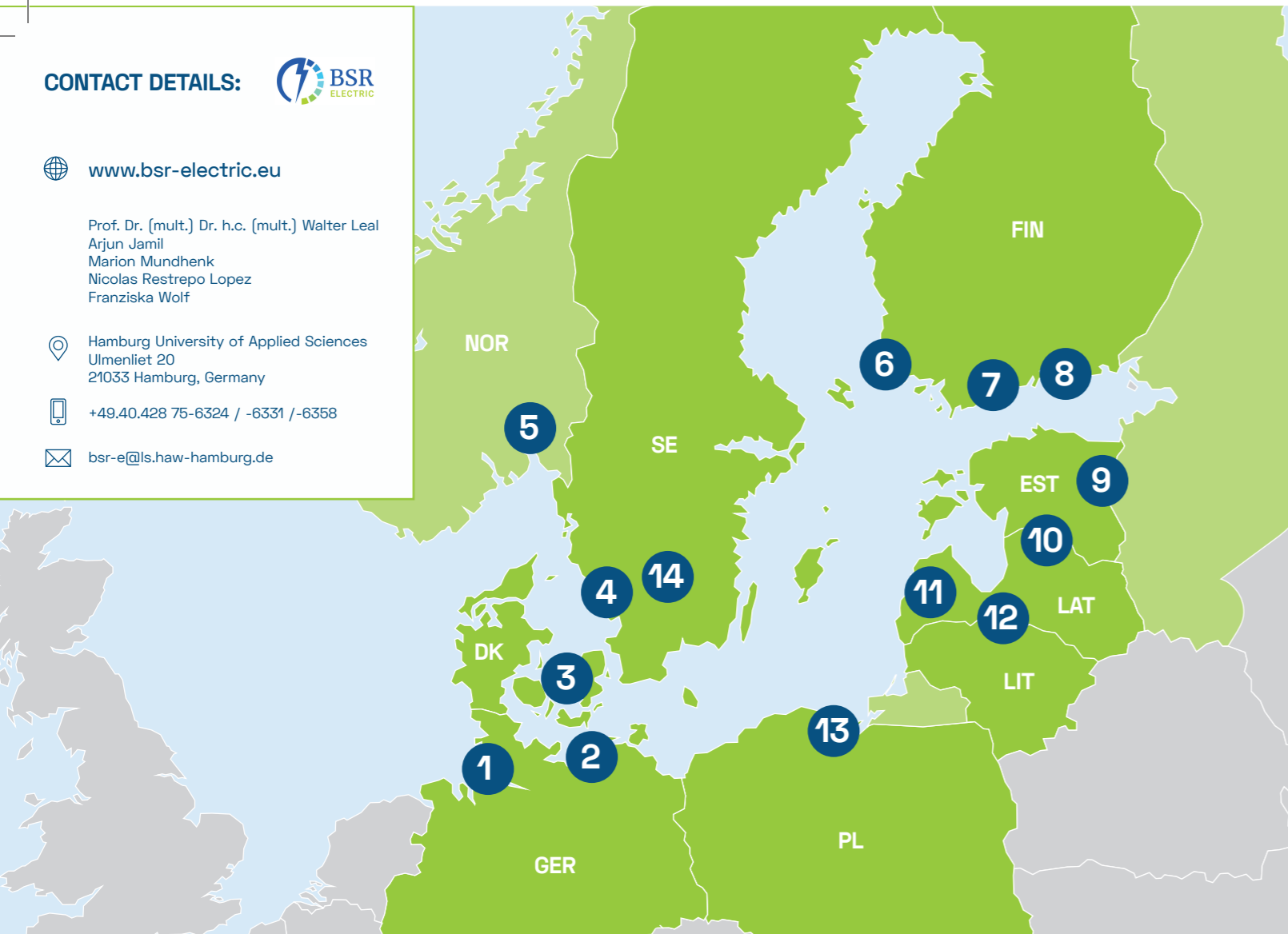
www.bsr-electric.eu

Prof. Dr. (mult.) Dr. h.c. (mult.) Walter Leal  
Arjun Jamil  
Marion Mundhenk  
Nicolas Restrepo Lopez  
Franziska Wolf

Hamburg University of Applied Sciences  
Ulmenliet 20  
21033 Hamburg, Germany

+49.40.428 75-6324 / -6331 / -6358

bsr-e@ls.haw-hamburg.de



# PARTNER CONSORTIUM

1 HAW HAMBURG	2 ATI KÜSTE	3 Heje-Taastrup Kommune	4 Lindholmen Science Park	5 ZERO
6 TURKU AMK TURKU UNIVERSITY OF APPLIED SCIENCES	7 gnf GreenNet Finland	8 HSY	9 Institute of Baltic Studies	10 Tartu city of good thoughts
11 ardenis	12 REA Riga Energy Agency	13 GDAŃSK	14 Göteborgs Stad	

## CAPACITY BUILDING

Publicly available webinars by experts to educate and update the audience on the latest developments in implementation of e-mobility.

webinars | publicly accessible | public events

## E-LEARNING

A course to learn policy implementation along with latest research in e-mobility for decision makers and researchers alike.

interactive | podcasts | networking group | open source

## POTENTIAL ANALYSIS

Stakeholder survey and Baltic Sea regional analysis for understanding the scope and relevance of existing e-mobility solutions, public database of current e-mobility implementations

8 baltic sea countries | open database of existing products and solutions

## THEME SPECIFIC RECOMMENDATIONS

Checklists of important activities and potential pitfalls to consider for successfully implementing an e-mobility solution, gathered from real world experiences from the BSR electric use cases.

implementation | theme specific recommendations related to planning | best practice checklists

# BSR ELECTRIC



This foldmap offers a compact overview of how the key activities of the BSR electric project feed into the overall BSR roadmap which aims at accelerating the uptake of e-mobility in urban areas in the Baltic Sea Region.

